

## MACHINE SPECIFICATION

ITEM/MODEL	5U	8U	8QM	8M	8UM
<b>TABLE</b>					
Table size	1300 x 300 mm	1500 x 350 mm	1500 x 350 mm		
T-slots (size x number x distance)	16 x 3 x 70 mm	16 x 5 x 60 mm	16 x 5 x 60 mm		
Table swiveling (R & L)	45°	45°	45°		
Table load capacity	500 kgs	700 kgs	700 kgs		
<b>TRAVEL</b>					
Automatic longitudinal	950 mm	1150 mm	1150 mm		
Automatic cross	380 mm	400 mm	400 mm		
Automatic vertical	450 mm	500 mm	500 mm		
Distance from spindle to overarm	155 mm	155 mm	155 mm		
Quill travel	-	-	150 mm	100 mm	-
<b>SPINDLE</b>					
Spindle taper	ISO-40	ISO-40/50 (optional)	ISO-40/50 (optional)		
Diameter of the spindle nose	88.88 mm	88.88 - 128.57 mm	88.88 - 128.57 mm		
Milling arbor diameter (*)	27 mm	27 mm	27 mm		
Number of spindle speeds (R.P.M.)	12 (50-1700) 50HZ (40-2100) 60HZ	12 (40-1800) 50HZ	12 (40-1800) 50HZ		
<b>FEEDS</b>					
Longitudinal and cross feeds	10 - 1208 mm	10 - 1208 mm	10 - 1208 mm		
Vertical feed	5 - 604 mm	5 - 604 mm	5 - 604 mm		
<b>RAPID TRAVERSE</b>					
Longitudinal and cross	1208 mm/min	1208 mm/min	1208 mm/min		
Vertical	5-604 mm/min	604 mm/min	604 mm/min		
<b>MOTORS</b>					
Main motor HP	5	7.5	7.5		
Feed motor HP		2.5	2.5		
<b>COOLANT</b>					
Coolant-pump HP	1/8		1/8		1/8
<b>MOTORIZED OVERARM</b>					
Housing of the taper spindle	-		ISO-40/50 (optional)		
Number of speeds	-			12	
Speed range (R.P.M.)	-		Variable Speed (70-3600)	35-1600 (50HZ) 42-1960 (60HZ)	
Motor HP	-		5	5.5	
<b>MACHINE WEIGHT</b>					
Net weight	2500 kgs	3100 kgs	3200 kgs	3200 kgs	
Gross weight	2700 kgs	3400 kgs	3500 kgs	3500 kgs	
Machine Dimensions	-	700x1700x1835 mm	700x1700x2696 mm	700x1700x2110 mm	
Packing measurement (LxWxH)	1700 x 2200 x 2200 mm	1800 x 2300 x 2300 mm	1800 x 2300 x 2300 mm	1800 x 2300 x 2300 mm	

\* Above specifications are subject to change without prior notice.

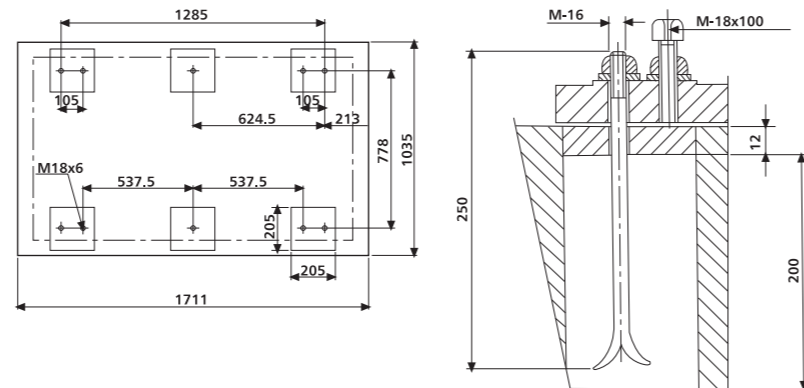
## STANDARD ACCESSORIES

- Ø27 mm horizontal ISO#40 milling arbor
- Horizontal & vertical manual draw-bars
- Coolant pump & coolant system
- Tool box with tools
- Manual lubrication pump
- Electrical box & swivel control panel

## OPTIONAL ACCESSORIES

- CE/EMC conformity
- Break motor with Vertical 5.5HP
- Break motor with Horizontal 7.5HP or 10HP
- Pneumatic power draw bar#40
- AC auto feed for over-arm
- Auto lubrication pump
- Coolant tray
- Universal dividing head BS-2 with 3 jaw chuck 6"
- V&H rotary table 10" or 12"
- Hydraulic vise 6" or 8"
- Power vise 6" or 8"
- 52 pcs clamping kit
- ISO#50 spindle taper
- Milling chuck set with 7pcs collet
- Quartz worklight
- 2 or 3 Axes DRO system (FAGOR)
- Ball screw for "X" Axis & "Y" Axis
- Enlarge table 1850 x 350 mm
- 10HP motor

## FOUNDATION DRAWING



**EURO-SOURCE** (Taiwan) Ltd.

# MILLING MACHINE

## Universal

**RIGID & PRECISE**

**EURO-SOURCE** (Taiwan) Ltd.

TEL: +886-4-22559500

FAX: +886-4-22559572

E-mail: eurosourcetw@gmail.com

[www.eurosource.com.tw](http://www.eurosource.com.tw)



20150130



# Universal Milling

## MACHINE FEATURES:

### MEEHANITE CAST IRON:

The structural parts are manufactured of Meehanite cast iron for outstanding material stability.

### OVERSIZED SLIDEWAYS:

The oversized slideways on three axes result in higher stability. Slideways are hardened and precision ground.

### X-AXIS GEARBOX:

With the gearbox driving longitudinal travel of the table, the machine is excellent for heavy cutting.

### AUTOMATIC LUBRICATION:

It delivers lubrication oil to all slideways and feed screws.

### POWER ELEVATION:

The table elevation is convenient and efficient through power operation.

### "WEAR-RESISTANCE FILM" COATED SLIDEWAYS:

X, Y-axis slideways are coated with "wear-resistance film" for smooth movement.



Vertical head is standard

## 2UM

- 240 x 1055 mm table size
- 6-step speed on horizontal & vertical, horizontal spindle



Machine Shown With Optional Accessories

## 3VHS

- 300 x 1200mm table size
- Variable speed on vertical spindle
- 6-step speed on horizontal spindle



## 6VHA

- 300 x 1500mm table size
- 16-step speed on vertical spindle
- 9-step speed on horizontal spindle



Machine Shown With Optional Accessories

## 6VHS

- 300 x 1500mm table size
- Variable speed on vertical spindle
- 9-step speed on horizontal spindle



## MACHINE SPECIFICATIONS

ITEM/MODEL	2UM	3VHS	6VHA	6VHS
<b>TABLE</b>				
Table Size	240 x 1055 mm (9" x 42")	300 x 1200 mm (12" x 47")	300 x 1500 mm (12" x 59")	300 x 1500 mm (12" x 59")
Table Load Capacity	300 kgs	300 kgs	300 kgs	300 kgs
Number of T-Slots	3	3	3	3
T-Slots Width	16 mm	16 mm	16 mm	16 mm
T-Slot Center Distance	63.5 mm	65 mm	70 mm	70 mm
Table Ways (X Axis)	Dovetail	Dovetail	Square	Square
Bed Ways (Y Axis)	Dovetail	Dovetail	Square	Square
Column Ways (Z Axis)	Dovetail	Dovetail	Square	Square
<b>TRAVELS</b>				
Longitudinal (X Axis) - Manual	560 mm (22")	700 mm (27")	1000 mm (39")	1000 mm (39")
Longitudinal (X Axis) - Auto (opt.)	560 mm (22")	700 mm (27")	1000 mm (39")	1000 mm (39")
Cross (Y Axis) - Manual	300 mm (12")	300 mm (12")	380 mm (15")	380 mm (15")
Vertical (Z Axis) - Manual	420 mm (16")	330 mm (13")	460 mm (18")	460 mm (18")
Table longitudinal feed motor	1 HP	1-1/2 HP	2 HP (4P / 8P)	2 HP (4P / 8P)
Range of longitudinal feed speed	60HZ: 21-246 mm/min ; 50HZ: 17-203 mm/min ; 6 steps		12-270 mm/min ; 12 steps	
Range of longitudinal rapid speed	60HZ: 2056 mm/min ; 50HZ: 1713 mm/min		60HZ: 1860 mm/min	
Table vertical rapid motor	-	-	1 HP (8P)	1 HP (8P)
Range of vertical rapid speed	-	-	680 mm/min	680 mm/min
Table swivel (R & L)	45°	45°	-	-
<b>VERTICAL TURRET SPINDLE</b>				
Spindle motor	-	5 HP	5 HP / 2P / 4P	5 HP / 4P
Amp. Draw 380V	60HZ: 4.92 , 50HZ: 5.09	60HZ: 4.92 , 50HZ: 8.27	60HZ: 8.1/7.52 , 50HZ: 8.39/7.81	60HZ: 4.92 , 50HZ: 8.27
Amp. Draw 230V	60HZ: 8.13 , 50HZ: 8.41	60HZ: 13.3 , 50HZ: 13.6	60HZ: 13.3/12.4 , 50HZ: 13.8/12.9	60HZ: 13.3 , 50HZ: 13.6
Amp. Draw 460V	60HZ: 4.06 , 50HZ: 4.2	60HZ: 6.69 , 50HZ: 6.83	60HZ: 6.69/6.21 , 50HZ: 6.93/6.45	60HZ: 6.69 , 50HZ: 6.83
Spindle speed (rpm) 50HZ	-	58-3165 vari-speed	63-3000 16 step	58-3160 vari-speed
Spindle speed (rpm) 60HZ	-	70-3800 vari-speed	75-3600 16 step	70-3800 vari-speed
Low range (rpm) 50HZ	-	58-383	75-346	
Low range (rpm) 60HZ	-	70-460	90-416	
High range (rpm) 50HZ	-	500-3165	381-2499	
High range (rpm) 60HZ	-	600-3800	458-3000	
Spindle Taper	NT 40	NT 40	NT 40	NT 40
Head swivel (R & L)	90°	90°	90°	90°
Overarm travel	-	455 mm (17.9")	450 mm (17.7")	450 mm (17.7")
Distance of spindle end to table top	-	155-475 mm (6"-19")	90-500 mm (0-450mm)	90-500 mm (0-450mm)
		3.5"-19.7" (0"-17.7")	3.5"-19.7" (0"-17.7")	3.5"-19.7" (0"-17.7")
Quill Feed in/revolution	-	0.0015 / 0.0031 / 0.006	0.0015 / 0.0031 / 0.006	0.0015 / 0.0031 / 0.006
Quill Feed mm/revolution	-	0.04 / 0.08 / 0.15	0.04 / 0.08 / 0.15	0.04 / 0.08 / 0.15
Quill travel	-	140 mm (5.5")	140 mm (5.5")	140 mm (5.5")
Quill Dia.	-	105 mm (4.13")	105 mm (4.13")	105 mm (4.13")

• Above specifications are subject to change without prior notice.

## MACHINE SPECIFICATIONS

ITEM/MODEL	2UM	3VHS	6VHA	6VHS
<b>HORIZONTAL SPINDLE</b>				
Spindle motor	3 HP	4 HP	5 HP	5 HP
Amp. Draw 380V	60HZ: 4.92 , 50HZ: 5.09	60HZ: 6.94 , 50HZ: 7.12	60HZ: 8.1 , 50HZ: 8.27	60HZ: 8.1 , 50HZ: 8.27
Amp. Draw 230V	60HZ: 8.13 , 50HZ: 8.41	60HZ: 11.4 , 50HZ: 11.7	60HZ: 13.3 , 50HZ: 13.67	60HZ: 13.3 , 50HZ: 13.67
Amp. Draw 460V	60HZ: 4.06 , 50HZ: 4.2	60HZ: 5.73 , 50HZ: 5.882	60HZ: 6.69 , 50HZ: 6.83	60HZ: 6.69 , 50HZ: 6.83
Spindle speed (rpm) 50HZ	90-1225 , 6 steps	90-1225 , 6 steps	10-1320	
Spindle speed (rpm) 60HZ	108-1470 , 6 steps	108-1470 , 6 steps	90-1320 , 9 steps	
Low range (rpm) 50HZ	90-358	90-358	-	-
Low range (rpm) 60HZ	108-430	108-430	-	-
High range (rpm) 50HZ	300-1225	300-1225	-	-
High range (rpm) 60HZ	360-1470	360-1470	-	-
Spindle Taper	NT 40	NT 40	NT 40	NT 40
Spindle center to table	0-320 mm	0-330 mm	0-460 mm	0-460 mm
Spindle center to overarm bottom	120 mm	135 mm	160 mm	160 mm
<b>CONSTRUCTION &amp; WEIGHT</b>				
Over Height	1760 mm	2020 mm	2400 mm	2400 mm
Over Depth	1200 mm	1200 mm	1700 mm	1700 mm
Over Width	1650 mm (one side)	1800 mm (one side)	2040 mm (one side)	2040 mm (one side)
Halogen Work Light	24V / 70W	24V / 70W	24V / 70W	24V / 70W
Coolant pump	1/8 HP	1/8 HP	1/8 HP	1/8 HP
Packing size	1397 x 1220 x 2032 mm	1575 x 1375 x 2507 mm	2083 x 2032 x 2109 mm	
Machine Net Weight lbs/kgs	2420 / 1100	2750 / 1250	4620 / 2100	4620 / 2100
Machine Gross Weight lbs/kgs	2750 / 1250	3036 / 1380	5060 / 2300	5060 / 2300

• Above specifications are subject to change without prior notice.

### STANDARD ACCESSORIES

- Cooling system
- X axis gearbox power feed
- Electrical box & control panel
- Tool box with tools
- Halogen worklight
- Draw bar
- Cutter arbor
- Cutter sleeve
- Auto lubrication pump (6VHA & 6VHS)
- Power feeder for Y axis (6VHA & 6VHS)
- Powered table up/down elevation (6VHA & 6VHS)
- X/Y axes ballscrew (6VHA & 6VHS)
- Y axis power motor 1 HP with inverter (6VHA & 6VHS)

### OPTIONAL ACCESSORIES

- CE/EMC conformity
- Coolant tray
- Electrical power drawbar
- Air power drawbar
- Milling chuck set with 7 pcs collet
- 52 pcs clamping kits
- 2 or 3 Axes DRO system
- 6" K-type vise
- 6" Angle-fixed vise

## MACHINE FEATURES:

- ISO #40 spindle taper is standard. ISO #50 is optional.
- Variable feed speeds on X,Y,Z-axis are controlled by inverter.
- Machine body is manufactured of Meehanite cast iron.
- Oversized square slideways on X,Y,Z-axis.
- Ruggedly constructed throughout for maximum stability without deformation.
- All gears and shafts are hardened and precision ground for low-noise running.

## U & M DIFFERENCE:

### U SERIES...

Universal head spindle is driven by the same gear box & motor of the horizontal spindle vertical spindle with a fixed head.

### M SERIES...

Universal head spindle with an independent gear box & motor for universal head spindle. The vertical spindle with a quill travel except 8UM.



## 5U (With HURON Head)

Angular machining & increasing efficiency !

- 1300 x 300mm table size
- 3 axes auto travels 950 x 380 x 450 mm

## 8U (With HURON Head)

Suitable for Performing Angular Machining !

- 1500 x 350mm table size
- 3 axes auto travels 1150 x 400 x 500 mm

## 8QM

Designed to meet versatile machining !

- 1500 x 350mm table size
- 3 axes auto travels 1150 x 400 x 500 mm

## 8M (With Quill Travel)

Tough ! Rugged ! Heavy Cutting !

- 1500 x 350mm table size
- 3 axes auto travels 1150 x 400 x 500 mm

## 8UM (With HURON Head)

Answer to flexible machining !

- 1500 x 350mm table size
- 3 axes auto travels 1150 x 400 x 500 mm